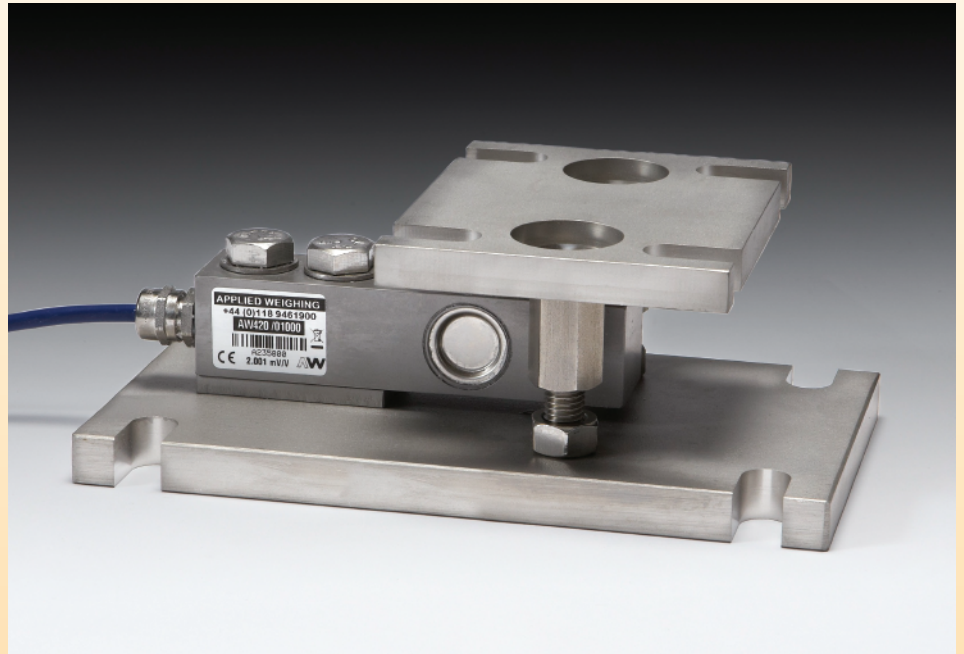




# Cleanmount®

## Range of Weighing Assemblies



### Features

- 250kg to 10,000kg capacities.
- For Hoppers, Tanks and Vessel weighing.
- Robust hygienic design for harsh industrial applications.
- Inbuilt strength 150% maximum overload.
- Fully welded stainless steel loadcell with sealing up to IP68.
- Designed and manufactured in the UK with a 5 year warranty.

### Options

- ATEX for Zone 0, 1, 2, 20, 21 and 22 hazardous areas.
- OIML C3 approval.
- Digital version with RS485 ASCII, Modbus, CAN and CANopen outputs.
- High temperature version up to 160°C.
- Range of industrial instrumentation and weight controllers.

### Description

The Cleanmount® is designed for harsh industrial weighing applications. It is ideally suited for weighing vessels, hoppers or tanks where hygiene is a priority. The assembly ensures precise, reliable and safe operation, with option for use in ATEX Hazardous Areas.

# ENGINEERING SPECIFICATIONS

## CLEANMOUNT® RANGE OF LOADING ASSEMBLIES

### Specifications

Full Scale Output: 2.00 mV/V Nominal  
 Creep (in 20 minutes) 0.02% maximum  
 Non-Linearity: 0.03% maximum  
 Hysteresis: 0.05% maximum  
 Non-Repeatability: 0.02% maximum  
 Compensated temperature range: -10°C to +40°C  
 Operating temperature range:  
 -40°C to +80°C (-35°C to +60°C for ATEX)  
 Load cell material: stainless steel 17-4 PH  
 Protection: up to IP68 (ATEX IP66)  
 Safe Overload: 150%  
 Insulation Resistance: 2000 MΩ

### For ATEX Category 1 - II 1GD

For ordering suffix the part number with 'X' i.e.  
 AW340/0100X (see certificate BAS99ATEX2067)

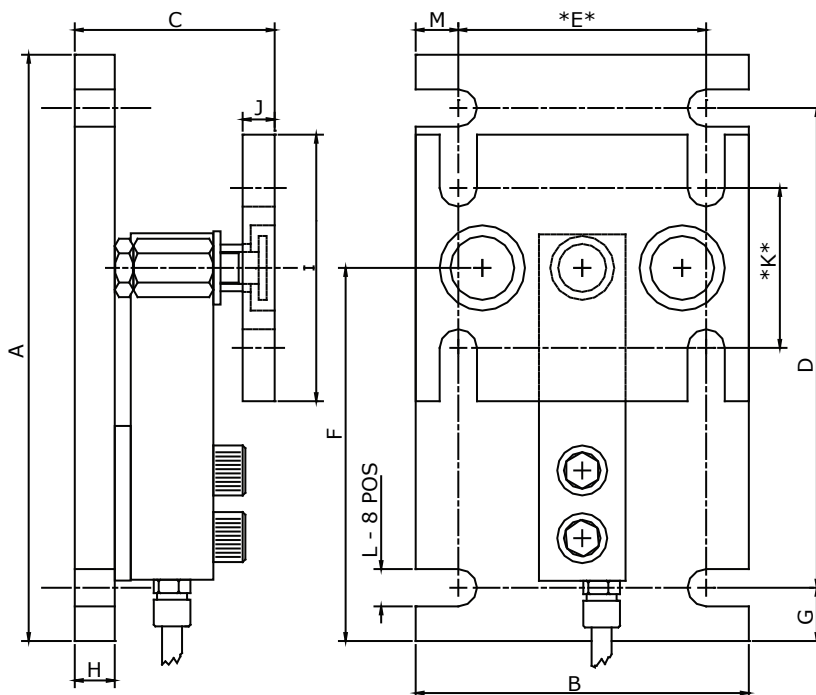
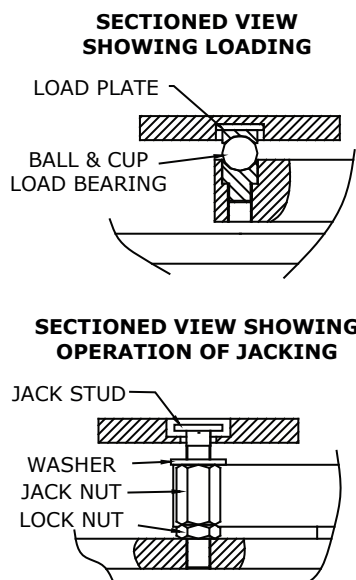
### For ATEX Category 3 - II 3GD

For ordering suffix the part number with 'XD' i.e.  
 AW340/0100XD (see certificate Baseefa09ATEX0147X)

Zero Balance: ±1% F. S.  
 Supply Voltage: 5-12 V (DC or AC) 15v max  
 Output Resistance: 350±5Ω  
 Input Resistance: 380Ω±30Ω

### PART NUMBERS 250kg - 10,000kg

Capacity	Part Number	A	B	C	D	E	F	G	H	I	J	K	L	M
250kg	AW340/00250	220	125	75 lowered / 78 raised	180	93	140	20	15	100	12	60	14	16
500kg	AW340/00500													
1,000kg	AW340/01000													
1,500kg	AW340/01500													
2,000kg	AW340/02000													
2,500kg	AW340/02500													
5,000kg	AW340/05000	300	150	122/127	250	110	220.5	25	25	100	25	60	18	20
7,500kg	AW340/07500													
10,000kg	AW340/10000	300	150	135/140	250	110	220.5	25	25	100	25	60	18	20



### Colour Code:

Positive Excitation - RED  
 Negative Excitation - BLUE  
 Positive Signal - GREEN  
 Negative Signal - YELLOW

**Cable:** 6 metres 4 core screened

### \*NOTES

To allow for lateral adjustment, use fixing dimensions;  
 Top Plate - 93 x 70 (250kg - 2,500kg)  
 Base Plate - 103 x 180 (5,000kg - 10,000kg)  
**Refer to installation documents before use**

Pneutrol International Limited

sales@pneutrol.com



UK Office  
 5 Caulside Drive, Antrim, BT41 2DU  
 United Kingdom  
 TEL: +44 (0) 28 9448 1800  
 www.concretespares.co.uk

European Office  
 Unit 6, Saint Anthony's Business Park, Ballymount Road, D22 VW95  
 Ireland  
 TEL: +353 (0) 1 4373653  
 www.concretespares.ie