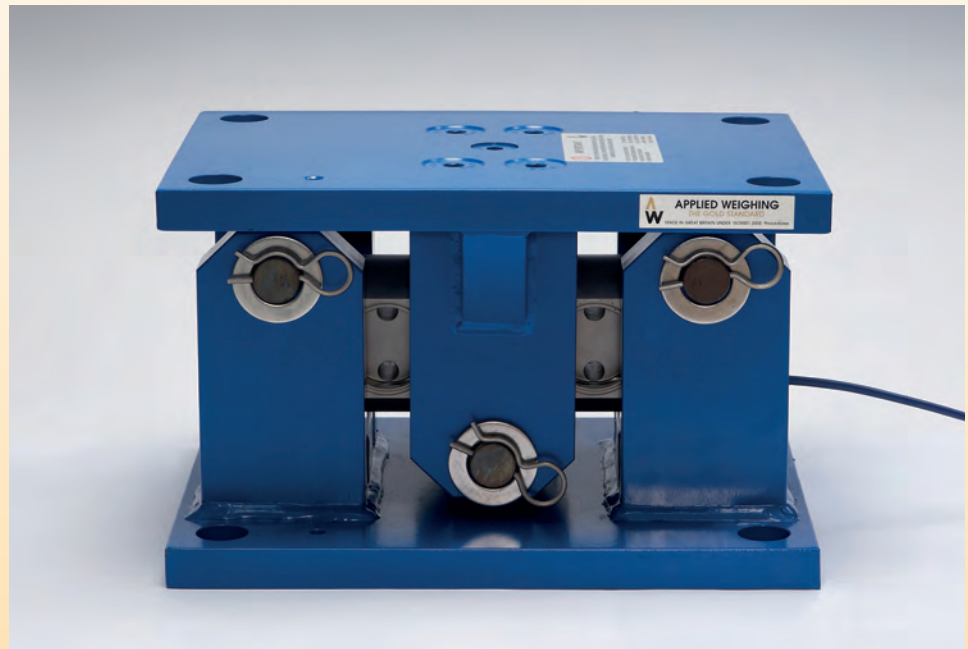




Safemount® II

Range of Weighing Assemblies



Features

- Capacities of 60,000kg and 80,000kg.
- For industrial weighing of Silos, Hoppers, Tanks and Vessels.
- Robust design for harsh industrial applications.
- Inbuilt strength 150% maximum overload.
- Fully welded stainless steel loadcell with sealing up to IP68.
- BS EN 1090-2:2018 Execution Class 2.
- Designed and manufactured in the UK with a 5 year warranty.

Options

- 304 Stainless Steel loading assembly.
- ATEX certified to use in Zone 1/21 and 2/22 hazardous areas.
- Digital Version with RS485 ASCII, Modbus, CAN and CANopen outputs.
- High temperature up to 160°C.
- Range of industrial instrumentation and weight controllers.

Description

The Safemount® II range of loading assemblies are designed for weighing in harsh industrial applications. Uses include silo, hopper, tank and vessel weighing. The load cell is manufactured from stainless steel, fully welded and sealed to prevent the ingress of dust or moisture to give accurate, repeatable weighing results.

ENGINEERING SPECIFICATIONS

SAFEMOUNT® II LOADCELL RANGE

Specifications

Full Scale Output:	2.00mV/V Nominal
Creep (in 20 minutes)	0.05% maximum
Non-Linearity:	0.05% maximum
Hysteresis:	0.05% maximum
Non-Repeatability:	0.05% maximum
Compensated temperature range:	-10°C to +40°C
Operating temperature range:	-40°C to +80°C (-35°C to +60°C for ATEX)
Load cell material:	Stainless steel 17-4 PH
Protection:	up to IP68
Safe Overload:	150%
Insulation Resistance:	2000 MΩ

For ATEX Category 1 - II 1GD

*For ordering suffix the part number with 'X'
i.e. AW318/6000X (see certificate BAS99ATEX2067)

For ATEX Category 3 - II 3GD

*For ordering suffix the part number with 'XD'
i.e. AW318/6000XD (see certificate Baseefa09ATEX0147X)

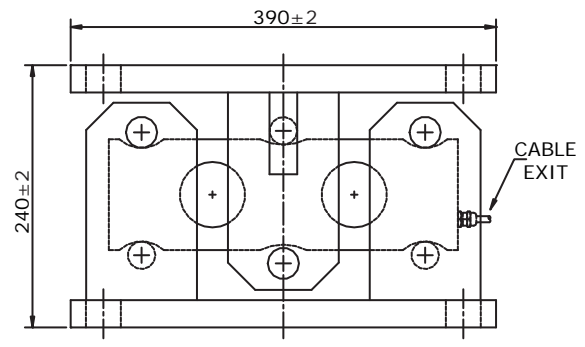
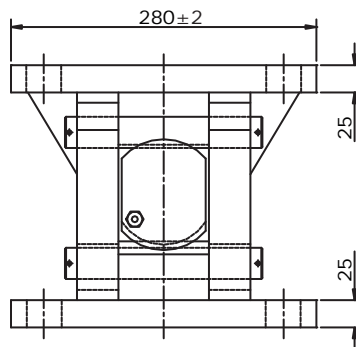
Zero Balance:	±1% F. S.
Supply Voltage:	5-12 V (DC or AC)
Max Voltage:	15V
Output Resistance:	700±5Ω
Input Resistance:	780Ω Nominal

Silos subject to wind loading should be fitted with a lift-off protection. Refer to installation documents.

PART NUMBERS 60,000kg and 80,000kg

Capacity	Stainless steel load cell only	Stainless steel load cell & mild steel loading assembly	Dummy load cell & mild steel loading assembly	Dummy mild steel load cell only
60,000 kg	AW319/60000	AW318/60000	AW318/00000	AW318/00001
80,000 kg	AW319/80000	AW318/80000		Pin Set AW317/00004

Weight 100kg

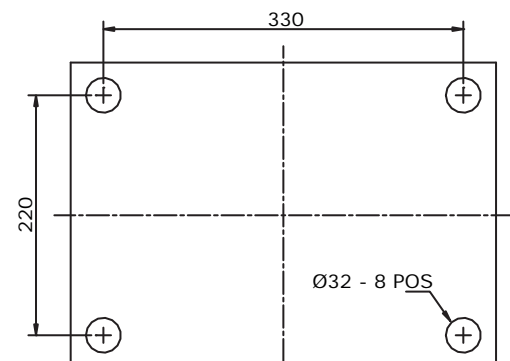


Colour Code:

Positive Excitation - RED
Negative Excitation - BLUE
Positive Signal - GREEN
Negative Signal - YELLOW

Cable: 10 metres
4 core screened

Dimensions given in mm
Refer to installation documents before use



MAXIMUM LOADINGS

Capacity	Maximum Compression Loading	Maximum Up-Lift Force	Maximum Side Force Longitudinal	Maximum Side Force Transverse	Transverse Expansion
60,000 & 80,000kg	150% of rated capacity	165 kN	200 kN	120kN	±6mm