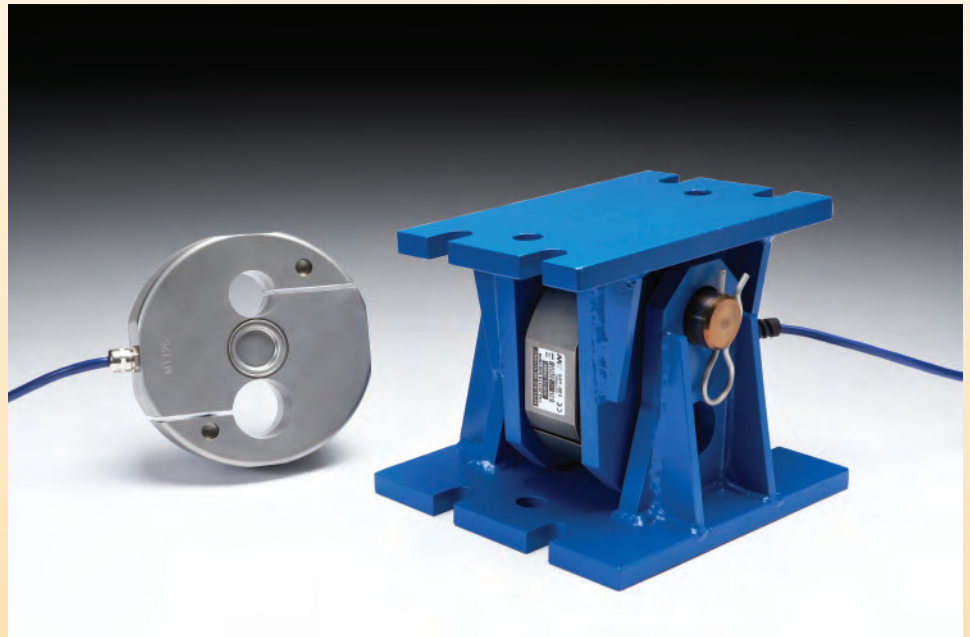


Titan 95

Range of Weighing Assemblies



upto
IP68

Features

- 2,000kg, 5,000kg and 10,000kg capacities.
- For Axle Weigh Bridges, Vessel, Tank and Hopper weighing.
- Durable plastic coated mild steel loading assembly.
- Inbuilt strength 150% maximum overload.
- Fully welded stainless steel, with sealing up to IP68.
- Designed and manufactured in the UK with a 5 year warranty.

Options

- ATEX certified for Zone 0, 1, 2, 20, 21 and 22 Hazardous Areas.
- OIML C3 approval.
- Digital with RS485 ASCII, Modbus, CAN and CANopen outputs.
- High temperature up to 160°C.
- Stainless steel weighing assembly.
- Range of industrial instrumentation and weight controllers.

Description

The Titan 95 range of load cells are designed for harsh industrial applications. Uses include axle weigh bridges, hoppers, tanks and vessels. The assembly will accept movement and misalignment.

ENGINEERING SPECIFICATIONS

TITAN 95 RANGE OF WEIGHING ASSEMBLIES

Specifications

Full Scale Output: 2.00mV/V Nominal
 Creep (in 20 minutes) 0.02% maximum
 Non-Linearity: 0.03% maximum
 Hysteresis: 0.05% maximum
 Non-Repeatability: 0.02% maximum
 Compensated temperature range: -10°C ... +40°C
 Operating temperature range:
 -40°C ... +80°C (-35°C...60°C for ATEX)
 Load cell material: Stainless steel 17-4 PH
 Protection: up to IP68 (ATEX IP66)
 Safe Overload: 150%
 Insulation Resistance: 2000 MΩ
 Zero Balance: ±1% F. S.

For ATEX Category 1 - II 1GD

For ordering suffix the part number with 'X' i.e.
 AW513/0200X (see certificate BAS99ATEX2067)

For ATEX Category 3 - II 3GD

note: stainless steel version only.

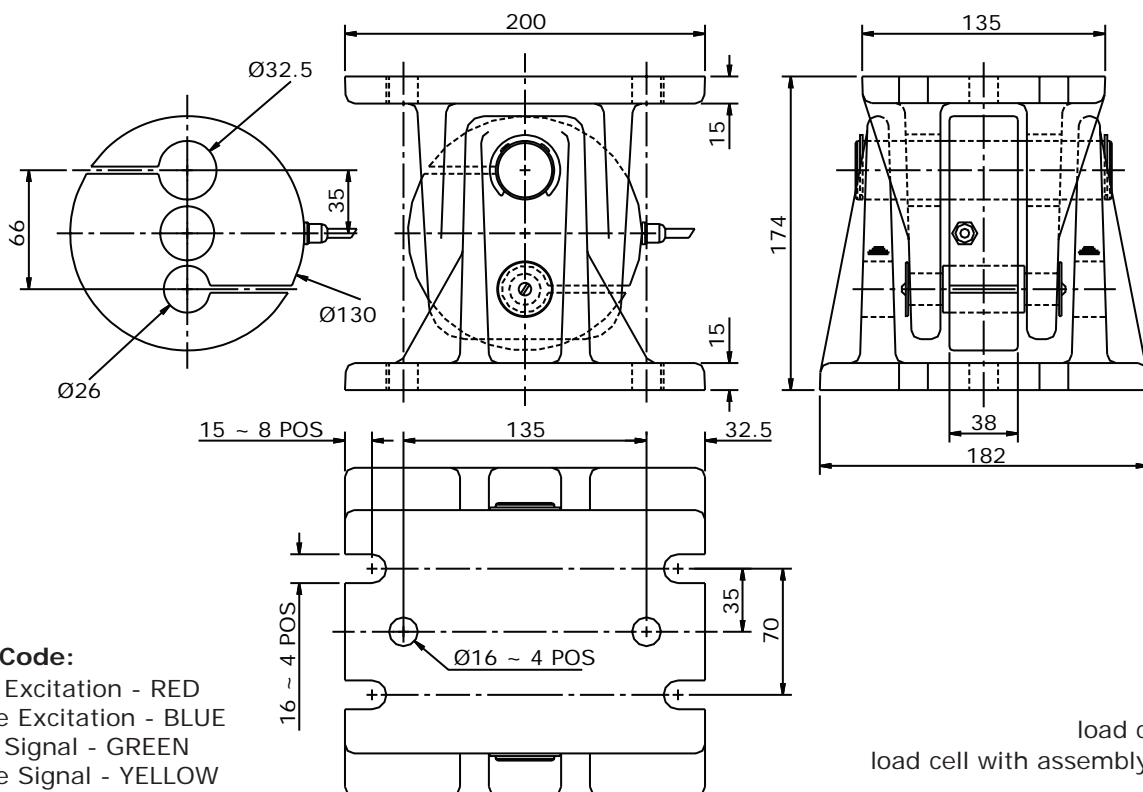
For ordering suffix the part number with 'XD' i.e.

AW513/0200XD (see certificate Baseefa09ATEX0147X)

Supply Voltage: 5-12 V (DC or AC) 15v
 Max Voltage: 15V
 Output Resistance: 350±5Ω
 Input Resistance: 380±30Ω

PART NUMBERS 2,000Kg - 10,000Kg

Capacity	Plastic coated assembly & load cell	Stainless steel assembly & load cell	Stainless steel load cell only	Stainless dummy cell
2,000 kg	AW342/02000	AW344/02000	AW513/02000	AW904/00005
5,000 kg	AW342/05000	AW344/05000	AW513/05000	Mild steel dummy cell
10,000 kg	AW342/10000	AW344/10000	AW513/10000	AW904/00006
	Assembly only AW342/00000	Assembly only AW344/00000	10t High Impact AW513EH/10000	Pins & circlip set AW342/00002



Colour Code:

Positive Excitation - RED
 Negative Excitation - BLUE
 Positive Signal - GREEN
 Negative Signal - YELLOW

Cable: 10 metres
 4 core screened

Weight

load cell: 3.7kg
 load cell with assembly: 15.6Kg

All dimensions in mm
 Refer to installation documents before use

Pneutrol International Limited

sales@pneutrol.com



UK Office
 5 Caulside Drive, Antrim, BT41 2DU
 United Kingdom
 TEL: +44 (0) 28 9448 1800
 www.concretespares.co.uk

European Office
 Unit 6, Saint Anthony's Business Park, Ballymount Road, D22 VW95
 Ireland
 TEL: +353 (0) 1 4373653
 www.concretespares.ie