

# Ultra Shear Beam

## Range of Load Cells



### Features

- Capacities from 250kg to 10,000kg.
- For Platforms, Hoppers, Tanks and Scales.
- Robust design for harsh industrial, chemical and food applications.
- Inbuilt strength 150% maximum overload.
- Fully welded stainless steel (IP68), for wash down environments.
- Designed and manufactured in the UK with a 5 year warranty.

### Options

- ATEX option for Zone 0, 1, 2, 20, 21 and 22 hazardous areas.
- OIML C3 approval.
- Digital Version with RS485 ASCII, Modbus, CAN and CANopen outputs.
- High temperature option up to 160°C.
- Range of weighing assemblies and weight instrumentation.

### Description

The Ultra range of load cells are designed for harsh wash down industrial applications. The load cell is manufactured from stainless steel, fully welded and sealed to prevent moisture ingress. The range is designed for use in platforms, hopper and tank weighing applications.

# ENGINEERING SPECIFICATIONS

## ULTRA SHEAR BEAM LOAD CELL

### Specifications

Full Scale Output: 2.00 mV/V Nominal  
 Creep (in 20 minutes) 0.02% maximum  
 Non-Linearity: 0.03% maximum  
 Hysteresis: 0.05% maximum  
 Non-Repeatability: 0.02% maximum  
 Compensated temperature range: -10°C to +40°C  
 Operating temperature range:  
 -40°C to +80°C (-35°C to +60°C for ATEX)  
 Load cell material: stainless steel 17-4 PH  
 Protection: up to IP68 (ATEX IP66)  
 Safe Overload: 150%  
 Insulation Resistance: 2000 MΩ

### For ATEX Category 1 - II 1GD

For ordering suffix the part number with 'X' i.e.  
 AW420/0100X (see certificate BAS99ATEX2067)

### For ATEX Category 3 - II 3GD

For ordering suffix the part number with 'XD' i.e.  
 AW420/0100XD (see certificate Baseefa09ATEX0147X)

Zero Balance: ±1% F. S.  
 Supply Voltage: 5-12 V (DC or AC)  
 Max Voltage: 15V  
 Output Resistance: 350±5Ω  
 Input Resistance: 380Ω±30Ω

### PART NUMBERS 250kg - 10,000kg

Capacity	Part Number	A	B	C	D	E	F	G	H	I	J	K	L	M
250kg	AW420/00250													
500kg	AW420/00500													
1,000kg	AW420/01000	130	32	31	16	25.4	76	13	Ø19	M12x1.75	19	12	6	58
1,500kg	AW420/01500													
2,000kg	AW420/02000													
2,500kg	AW420/02500													
5,000kg	AW420/05000	176	38	38	25	38	95	17	n/a	M20x2.5	n/a	n/a	6	80
7,500kg	AW420/07500	176	38	38	25	38	95	20	n/a	M20x2.5	n/a	n/a	6	80
10,000kg	AW420/10000	225	50	50	25	50	124	26	n/a	Ø 26	n/a	n/a	6	100

### Spacer Plate

AW910/00003 (250kg-2,500kg)  
 AW910/00004 (5,000kg & 7,500kg)  
 AW910/00005 (10,000kg)

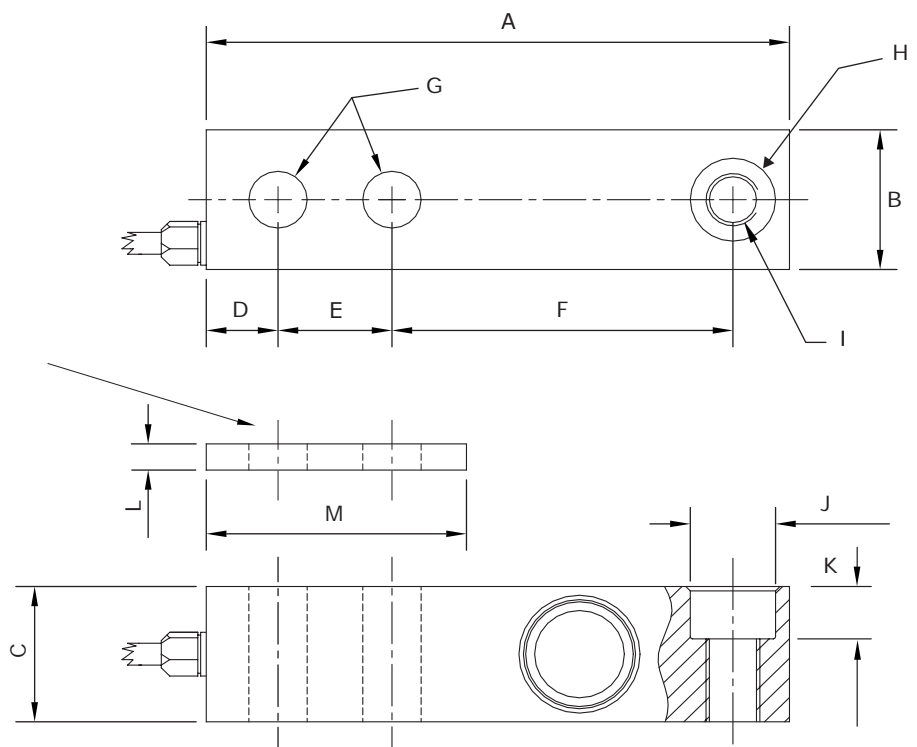
### Dummy loadcell

AW901/00003 (250kg-2,500kg)  
 AW901/00004 (5,000kg & 7,500kg)  
 AW901/00005 (10,000kg)

### Colour Code:

Positive Excitation - RED  
 Negative Excitation - BLUE  
 Positive Signal - GREEN  
 Negative Signal - YELLOW

Cable: 6 metres  
 4 core screened



Refer to installation documents before use.

Pneutrol International Limited

sales@pneutrol.com



UK Office  
 5 Caulside Drive, Antrim, BT41 2DU  
 United Kingdom  
 TEL: +44 (0) 28 9448 1800  
 www.concretespares.co.uk

European Office  
 Unit 6, Saint Anthony's Business Park, Ballymount Road, D22 VW95  
 Ireland  
 TEL: +353 (0) 1 4373653  
 www.concretespares.ie