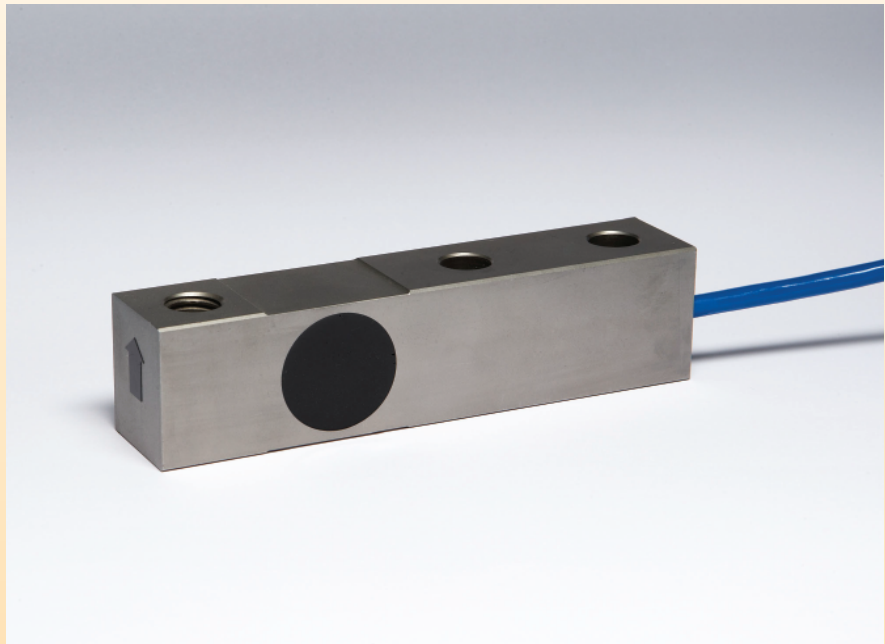




# Warrior

## Range of Load Cells



CE

upto  
IP66

### Features

- 100kg to 2,000kg capacities.
- For Platforms, Hoppers and Tank weighing.
- Robust design for harsh industrial applications.
- Inbuilt strength 150% maximum overload.
- Aluminium alloy or stainless steel with sealing up to IP66.
- Designed and manufactured in the UK with a 5 year warranty.

### Options

- Digital with RS485 ASCII, Modbus, CAN and CANopen outputs.
- High temperature version up to 160°C.
- Range of industrial instrumentation and weight controllers.

### Description

The Warrior range of load cells are designed for harsh industrial applications. Uses include platforms, hoppers and tank weighing. The load cell is manufactured from stainless steel or aluminium alloy and is sealed against the ingress of moisture and dust.

Pneutrol International Limited

sales@pneutrol.com



UK Office  
5 Caulside Drive, Antrim, BT41 2DU  
United Kingdom  
TEL: +44 (0) 28 9448 1800  
www.concretespares.co.uk

European Office  
Unit 6, Saint Anthony's Business Park, Ballymount Road, D22 VW95  
Ireland  
TEL: +353 (0) 1 4373653  
www.concretespares.ie

# ENGINEERING SPECIFICATIONS

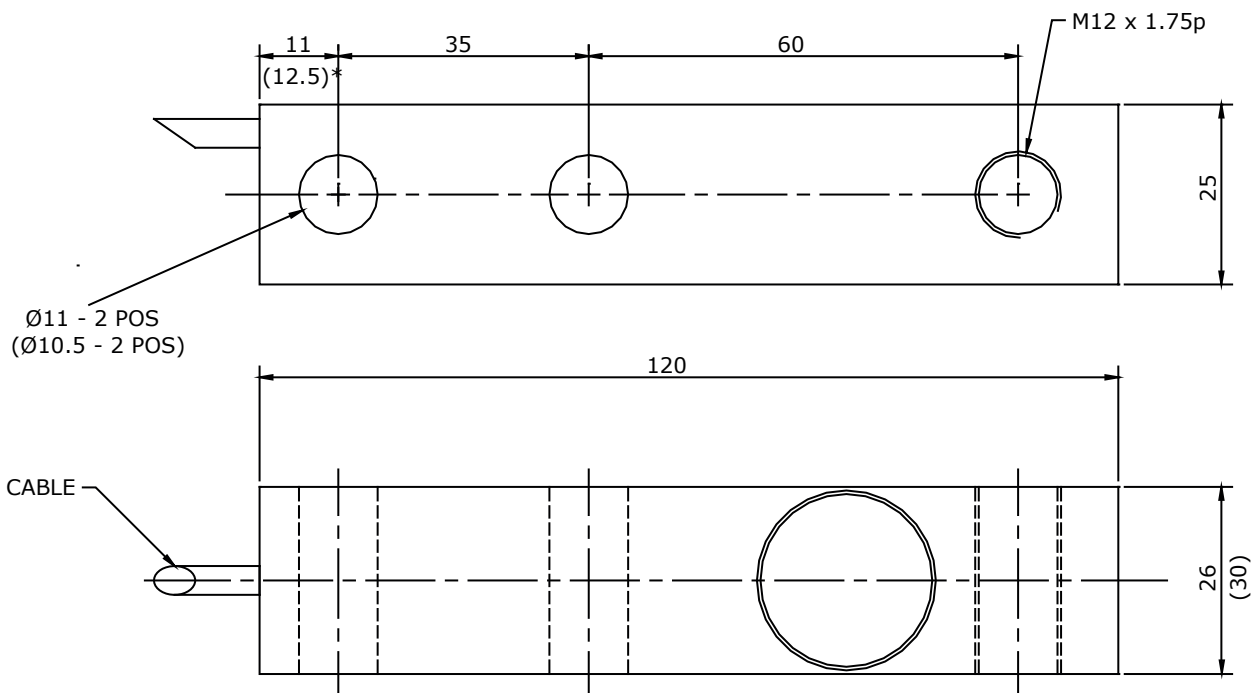
## WARRIOR RANGE OF LOAD CELLS

### Specifications

Full Scale Output:	2.00mV/V Nominal	Protection:	up to IP66
Creep (in 20 minutes)	0.02% maximum	Safe Overload:	150%
Non-Linearity:	0.03% maximum	Insulation Resistance:	2000 MΩ
Hysteresis:	0.05% maximum	Zero Balance:	±1% F. S.
Non-Repeatability:	0.02% maximum	Supply Voltage:	5-12 V (DC or AC)
Compensated temperature range:		Max Voltage:	15V
-10°C to +40°C		Load cell material:	Stainless steel 17-4 PH or Anodized Aluminium alloy
Operating temperature range:			
-40°C to +80°C			

### PART NUMBERS 100kg - 2,000kg

Capacity	Aluminium Alloy Part Number	Stainless Steel Part Number
100kg	AW400/00100	-
250kg	AW400/00250	AW412/00250
500kg	AW400/00500	AW412/00500
1,000kg	AW400/01000	AW412/01000
1,500kg	AW400/01500	AW412/01500
2,000kg	-	AW412/02000



### Colour Code:

Positive Excitation - RED  
 Negative Excitation - BLUE  
 Positive Signal - GREEN  
 Negative Signal - YELLOW

**Cable:** 6 metres  
 4 core screened

All dimensions in mm

**Refer to installation documents before use**

\*Dimensions: aluminium alloy (stainless steel shown in brackets)

Pneutrol International Limited

sales@pneutrol.com



UK Office  
 5 Caulside Drive, Antrim, BT41 2DU  
 United Kingdom  
 TEL: +44 (0) 28 9448 1800  
 www.concretespares.co.uk

European Office  
 Unit 6, Saint Anthony's Business Park, Ballymount Road, D22 VW95  
 Ireland  
 TEL: +353 (0) 1 4373653  
 www.concretespares.ie