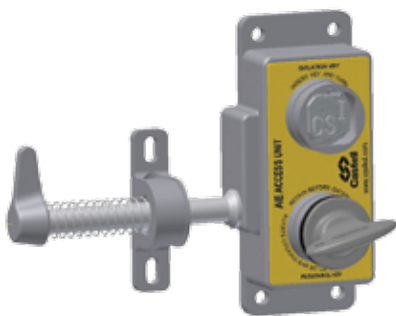


Full Body Access



AIE - Dual Key Access Interlock

- Dual key access interlock
- Suitable for use on hinged and sliding doors
- The interlock has an open cavity design
- Manufactured in either aluminum alloy/brass or stainless steel
- Ideal for harsh or corrosive environments where the lock is subject to heavy duty use
- Available in an exchange or double key condition
- Shear force of bolt: 24KN

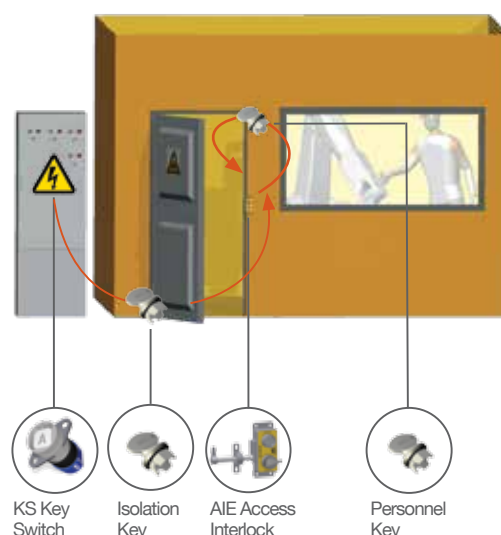
AIE-FSS-E-1

Application

A typical application of the AIE dual key access interlock is machine guarding with full body access. The AIE is used as part of a safety system, which ensures a machine is shut down, before access to the hazardous area is allowed.

The system involves a KS key switch for the electrical supply. The removal of the isolation key from the key switch isolates the electrical supply to the machine. This key is taken to the AIE and inserted into the lock. This allows the release of the personnel key and then the side bolt, which traps the isolation key. The personnel key is then taken into the area by the operative to safeguard themselves against accidental lock-in and start-up.

The machine cannot be restarted until the personnel key is returned, the bolt is replaced in the AIE and the isolation key is removed and taken to the KS.



Order Information

	Product Type	1	2	3	4	5
Part Number	AIE					
Example	AIE	FS	S	E	1	TBA

1	Lock portion type	FS ⁽¹⁾ / Q ⁽¹⁾
2	Material	AL = Aluminum alloy/brass S = Stainless steel
3	Key Condition	E = Exchange key condition / D = Double key condition (sequential removal of both keys)
4	Handing	1 = Left hinged door ⁽¹⁾ 2 = Right hinged door ⁽¹⁾
5	Lock portion symbol: Please advise for each lock portion separately as isolation key/lock symbol and personnel key/lock symbol	FS ⁽¹⁾ up to 3 characters / Q ⁽¹⁾ up to 6 characters



Pneutrol International Limited
UK Office
5 Caulside Drive, Antrim, BT41 2DU
United Kingdom
TEL: +44 (0) 28 9448 1800
www.concretespares.co.uk

sales@pneutrol.com
European Office
Unit 6, Saint Anthony's Business Park, Ballymount Road, D22 VW95
Ireland
TEL: +353 (0) 1 4373653
www.concretespares.ie