



GROUND LEVEL REMOTE TESTING OF SILOTOP SENSORS MEETING CURRENT MPA GUIDELINES



Safe-Silo GLT allows the operator to test sensors without the need to climb the silo.

Safe-Silo GLT is the newly pioneered system from PIL...

Operators no longer have to worry about the functionality of sensors mounted to the roof of their silo.



Safe-Silo GLT allows the operator to simply press a test button on the PIL filling panel from ground level and the system will automatically check the important safety equipment such as:

- **Silo Pressure Switch (if applicable)**
- **Silo Pressure Relief Valve**
- **Silo High Level**
- **Silo Fill Pipe Butterfly Valve**

Safe-Silo GLT automatically conducts a functional test of all safety sensors prior to allowing a bulk storage tanker to fill the silo.

*Current mandatory legislation for bulk storage silos states that silo safety equipment must be checked regularly. The **Safe-Silo GLT** system performs these checks with the simple push of a button, without the requirement for site personnel to climb to the top of the silo.*

For more information contact us NOW on

T: +44 28 9448 1800 E: info@pneutrol.com

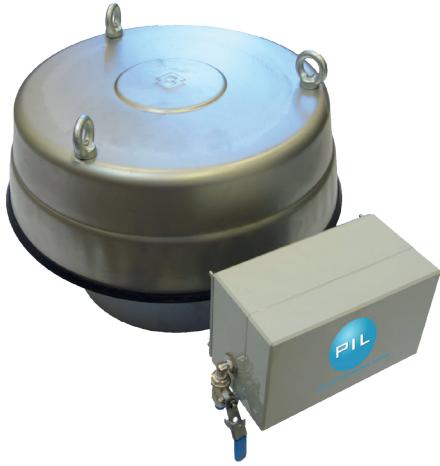
5 Caulside Drive, Antrim, Northern Ireland BT41 2DU



PNEUTROL INTERNATIONAL LIMITED

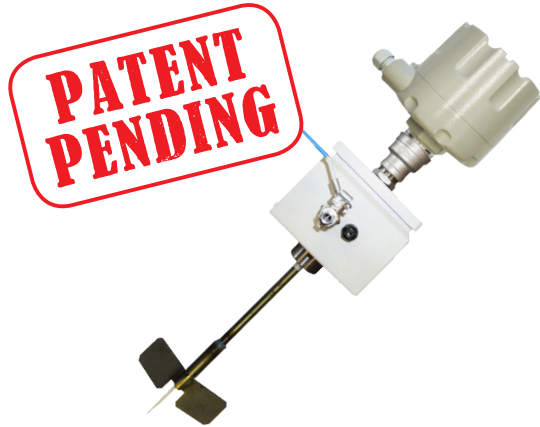


Full mechanical and electrical tests completed on your silo components from ground level



PRV Ground Level Test

- Physically lifts the pressure relief valve from ground level and verifies diaphragm movement.
- Can be easily retro-fitted to existing PRV's.



High Level Ground Level Test

- Physically stops the rotating shaft of the high level from turning to verify probe operation.
- Can be easily retro-fitted to existing high levels.
- Patent pending.



Pressure Switch Ground Level Test

- Physically checks the mechanical pressure switch activation at a preset pressure.
- Automatic system isolates the pressure switch from the silo and injects air into the pressure chamber to simulate an over pressure event.

Ground level test equipment removes the requirement for site personnel to climb silo's to manually test silo components.

For more information contact us NOW on

T: +44 28 9448 1800 E: info@pneutrol.com

5 Caulside Drive, Antrim, Northern Ireland BT41 2DU



PNEUTROL INTERNATIONAL LIMITED