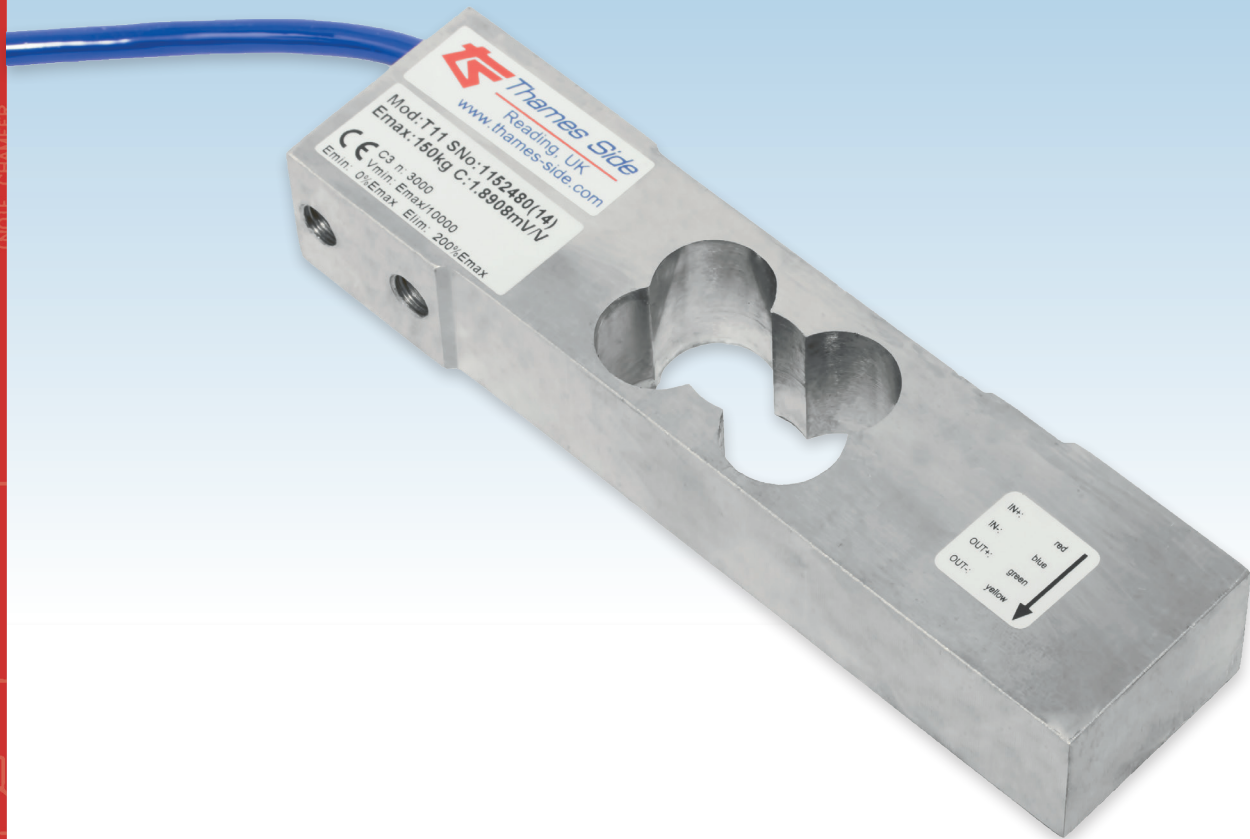


T11



SINGLE POINT LOAD CELL

capacities 15kg - 150kg



This double bending beam single point load cell is manufactured from high quality alloy steel and nickel plated. Its design allows for high accuracy weigh measurement with off-centre loads and it's potted and sealed to IP66.

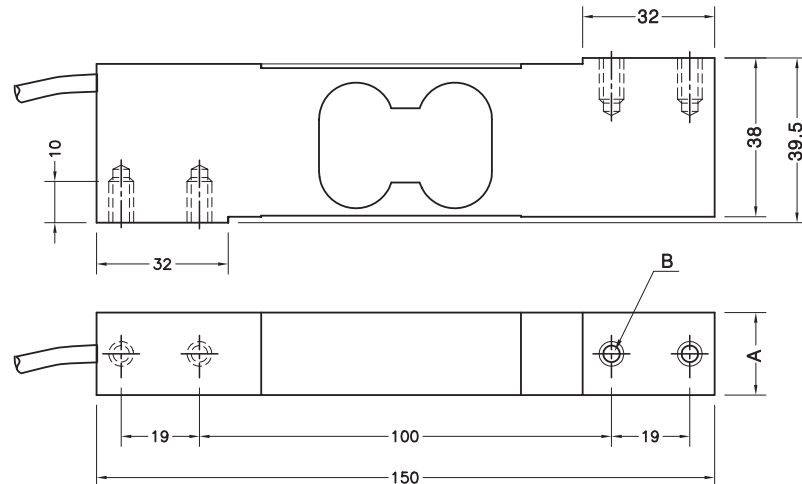
Typical applications include: single point platforms up to 500x500mm in size, small buckets and hoppers supported by a single load cell, small bagging and dosing machines, filling scales and checkweighers.

- Nickel plated alloy steel load sensor
- 5 year warranty
- Potted and silicone sealed to IP66
- 500 x 500mm max. platform size (with load cell placed centrally under platform)
- 3000 divisions OIML R60 Class C
- High durability Polyurethane cable



T11

technical specification...



T11 Load Cell

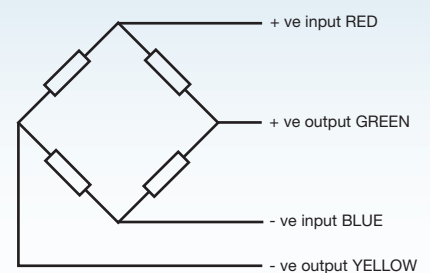
	Load cell specification	Units
Load Cell Capacity (E_{max})	15, 20, 30, 50, 75, 100, 150	kg
Rated Output (S_n)	2	mV/V \pm 10 %
Accuracy Class	3000 (See Note 1)	n.OIML
Combined Error	$< \pm 0.017$	% S_n
Non-repeatability	$< \pm 0.01$	% S_n
Minimum load cell verification interval (V_{min}) = E_{max} / Y	$E_{max} / 10000$	kg
Creep (30 minutes)	$< \pm 0.016$	% S_n
Temperature Effect on Zero Balance	$< \pm 0.002$	% $S_n / ^\circ C$
Temperature Effect on Span	$< \pm 0.0012$	% $S_n / ^\circ C$
Compensated Temperature Range	-10 to +40	$^\circ C$
Operating Temperature Range	-20 to +70	$^\circ C$
Safe Overload	150	% E_{max} *
Ultimate Overload	200	% E_{max} *
Zero Balance	$< \pm 2$	% S_n
Input Resistance	400	$\Omega \pm 20$
Output Resistance	350	$\Omega \pm 3$
Insulation Resistance	> 5000	M Ω @ 100V
Recommended Supply Voltage	5-15	V
Maximum Supply Voltage	15	V
Environmental Protection	IP66	
Maximum deflection at E_{max}	0.3-0.5	mm
Cable length	3	m
Cable Material	Polyurethane	
Maximum Platform Size +	500 x 500	mm
Nominal Shipping Weight (15 - 30kg)	1.0	kg
Nominal Shipping Weight (50 - 150kg)	1.2	kg

1. OIML C3 approval is available from 15kg to 75kg (inclusive)
 * Only applies to central loads on the load cell. Not for off-centre loads.
 + The load cell must be placed centrally under the platform

Dimensions

Range (kg)	15 - 30	50 - 150
A	20	25
B	M6	M8

Dimensions in mm



Electrical Connections

Via 4 wire, 5.7mm diameter, screened polyurethane cable.
 Screen not connected electrically to load cell.

Construction

High quality nickel plated alloy steel

DISTRIBUTED BY: PNEUTROL INTERNATIONAL LIMITED
 sales@pneutrol.com

UK OFFICE:
 5 CAULSIDE DRIVE, ANTRIM, NORTHERN IRELAND, BT41 2DU
 TEL: 44 (0) 28 9448 1800, www.concretespares.co.uk
 ROI OFFICE:
 UNIT 6, ST ANTHONY'S BUSINESS PARK DUBLIN, D22 VW95
 TEL: 353 (1) 437 3653, www.concretespares.ie

Issue: T11.03.19



Our policy is one of continuous product enhancement. We therefore reserve the right to incorporate technical modifications without prior notification.

