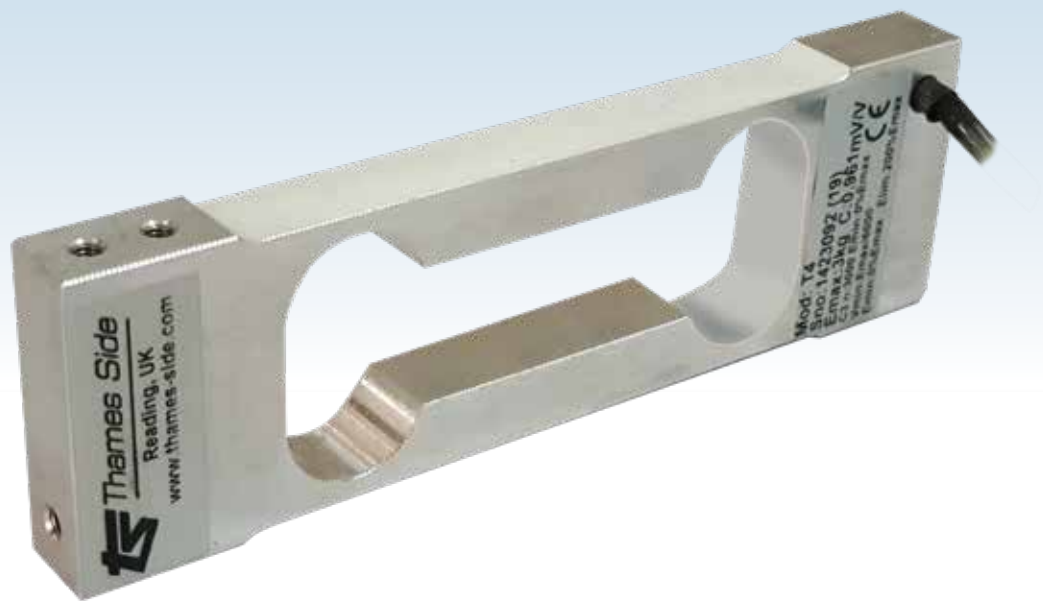


ALUMINIUM SINGLE POINT LOAD CELL

capacities 0.3kg - 3kg

NEW



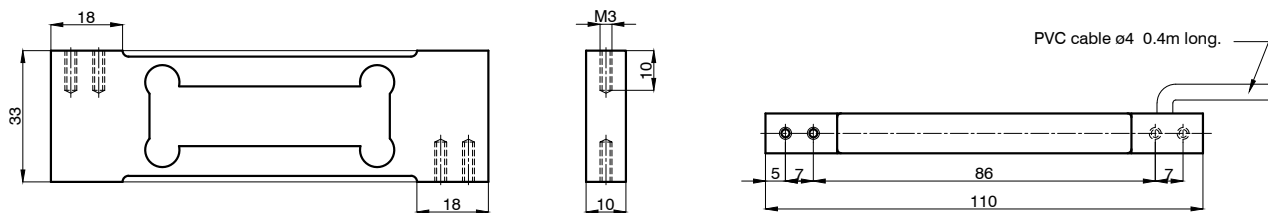
This double bending beam single point load cell is manufactured from high quality aluminium alloy. Its design allows for high accuracy weight measurement with off-centre loads. It's potted and sealed to IP66.

Typical applications include single point platforms up to 200x200mm in size, dosing machines as well as filling scales.

- Double bending beam load cell
- High quality aluminium alloy load sensor
- High accuracy with off-centre loads
- Potted and silicone sealed to IP66
- Wide operating temperature range
- 3000 divisions
- Combined error +/- 0.017%
- 1 year warranty
- 200 x 200mm maximum platform size (load cell placed centrally under the platform)

T4

technical specification...

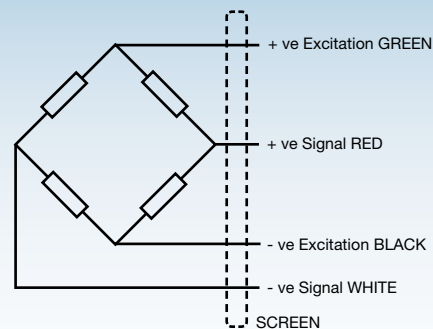


All dimensions in mm

T4 Load Cell

	Load cell specification	Units
Load Cell Capacity (E_{max})	0.3, 0.6, 1.2, 3	kg
Rated Output (S_n)	0.9	mV/V \pm 0.2 %
Accuracy class	3000	-
Combined Error	$< \pm 0.017$	% S_n
Non-repeatability	$< \pm 0.01$	% S_n
Minimum load cell interval (V_{min}) = E_{max} / Y	$E_{max} / 6000$	kg
Creep (30 minutes)	$< \pm 0.016$	% S_n
Temperature Effect on Zero Balance	$< \pm 0.01$	% $S_n / 5^\circ C$
Temperature Effect on Span	$< \pm 0.006$	% $S_n / 5^\circ C$
Compensated Temperature Range	-10 to +40	$^\circ C$
Operating Temperature Range	-20 to +70	$^\circ C$
Safe Overload	150	% E_{max}^*
Ultimate Overload	200	% E_{max}^*
Zero Balance	$< \pm 2$	% S_n
Input Resistance	400	$\Omega \pm 20$
Output Resistance	350	$\Omega \pm 3$
Insulation Resistance	> 5000	M Ω @ 100V
Recommended Supply Voltage	5-15	V
Maximum Supply Voltage	15	V
Environmental Protection	IP66	-
Maximum deflection at E_{max}	0.3 - 0.5	mm
Cable Length	0.4	m
Cable Material	PVC	-
Nominal Shipping Weight	0.15	kg

* Load limit applies to central loads only. Load limit for off-centre loads will be lower.



Electrical Connections

Via 4 core, 4mm diameter, screened PVC cable.
Screen not connected electrically to load cell.

Construction

Load cell manufactured from high quality aluminium alloy

DISTRIBUTED BY: PNEUTROL INTERNATIONAL LIMITED

sales@pneutrol.com

UK OFFICE:

5 CAULSIDE DRIVE, ANTRIM, NORTHERN IRELAND, BT41 2DU

TEL: 44 (0) 28 9448 1800, www.concretespares.co.uk

ROI OFFICE:

UNIT 6, ST ANTHONY'S BUSINESS PARK DUBLIN, D22 VW95

TEL: 353 (1) 437 3653, www.concretespares.ie

