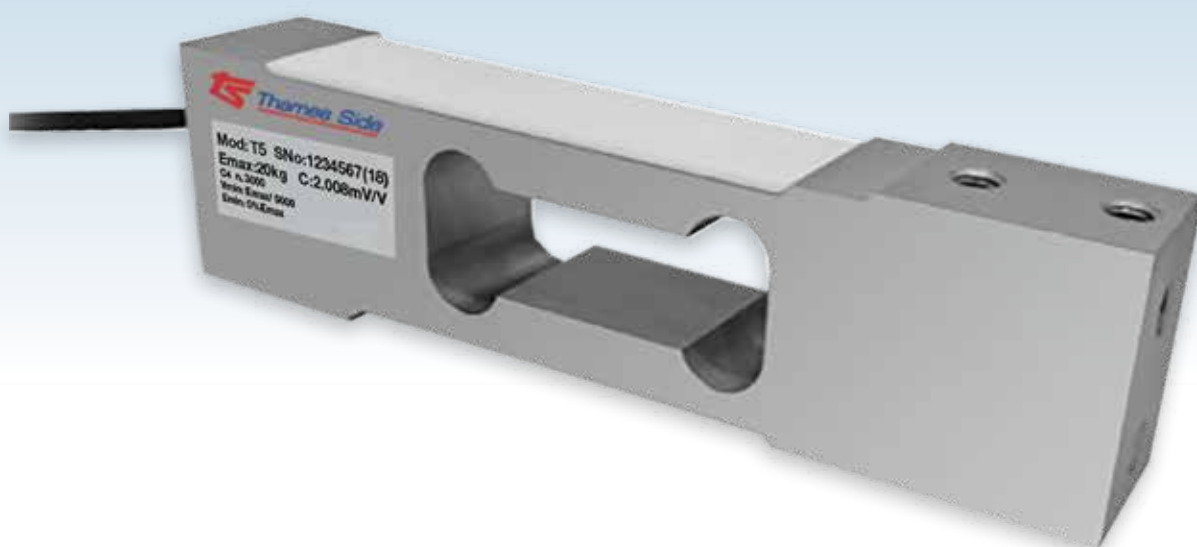


ALUMINIUM SINGLE POINT LOAD CELL

capacities 3kg - 100kg

NEW

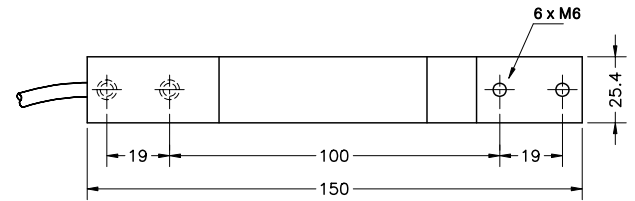
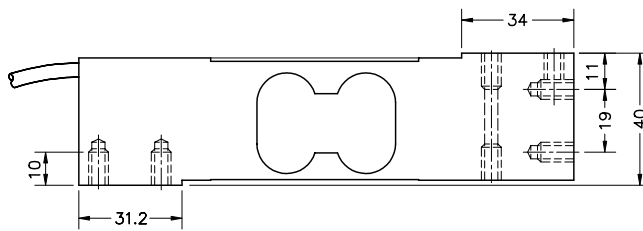
This double bending beam single point load cell is manufactured from high quality aluminium alloy. Its design allows for high accuracy weight measurement with off-centre loads. It's potted and sealed to IP66.

Typical applications include: single point platforms up to 400x400mm in size, small buckets and hoppers supported by a single load cell, small bagging & dosing machines as well as filling scales.

- Double bending beam load cell
- High quality aluminium alloy load sensor
- High accuracy with off-centre loads
- Potted and silicone sealed to IP66
- Wide operating temperature range
- 3000 divisions
- Combined error +/- 0.017%
- 1 year warranty
- 400 x 400mm maximum platform size (load cell placed centrally under the platform)

T5

technical specification...

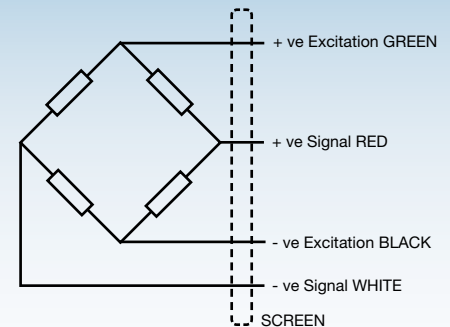


All dimensions in mm

T5 Load Cell

	Load cell specification	Units
Load Cell Capacity (E_{max})	3, 5, 8, 10, 15, 20, 30, 50, 75, 100	kg
Rated Output (S_n)	2	mV/V \pm 10 %
Accuracy class	3000	-
Combined Error	$< \pm 0.017$	% S_n
Non-repeatability	$< \pm 0.01$	% S_n
Minimum load cell interval (V_{min}) = E_{max} / Y	$E_{max} / 10000$	kg
Creep (30 minutes)	$< \pm 0.016$	% S_n
Temperature Effect on Zero Balance	$< \pm 0.01$	% $S_n / 5^\circ C$
Temperature Effect on Span	$< \pm 0.006$	% $S_n / 5^\circ C$
Compensated Temperature Range	-10 to +40	$^\circ C$
Operating Temperature Range	-20 to +70	$^\circ C$
Safe Overload	150	% E_{max} *
Ultimate Overload	200	% E_{max} *
Zero Balance	$< \pm 2$	% S_n
Input Resistance	400	$\Omega \pm 20$
Output Resistance	350	$\Omega \pm 3$
Insulation Resistance	> 5000	M Ω @ 100V
Recommended Supply Voltage	5-15	V
Maximum Supply Voltage	15	V
Environmental Protection	IP66	-
Maximum deflection at E_{max}	0.3 - 0.5	mm
Cable Length	3	m
Cable Material	PVC	-
Nominal Shipping Weight	0.45	kg

* Load limit applies to central loads only. Load limit for off-centre loads will be lower.



Electrical Connections

Via 4 core, 4mm diameter, screened PVC cable.
Screen not connected electrically to load cell.

Construction

Load cell manufactured from high quality aluminium alloy

DISTRIBUTED BY: PNEUTROL INTERNATIONAL LIMITED

sales@pneutrol.com

UK OFFICE:

5 CAULSIDE DRIVE, ANTRIM, NORTHERN IRELAND, BT41 2DU

TEL: 44 (0) 28 9448 1800, www.concretespares.co.uk

ROI OFFICE:

UNIT 6, ST ANTHONY'S BUSINESS PARK DUBLIN, D22 VW95

TEL: 353 (1) 437 3653, www.concretespares.ie



Issue: IN/T5.06.19

Our policy is one of continuous product enhancement. We therefore reserve the right to incorporate technical modifications without prior notification.